



VSTi Host

User Manual Addendum

version 3.1, OS 9

March 20, 2003

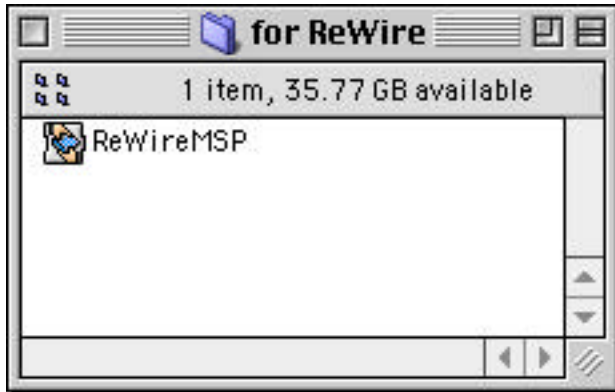
Dan Nigrin

Overview:

Version 3.1 of VSTi Host on OS 9 includes all of the functionality of version 3.0, with the important additions of ReWire and DirectConnect support. In addition, there are a few bug fixes as well (see below). This addendum discusses only the new functionality; please refer to the full version 3.0 manual for general operating instructions.

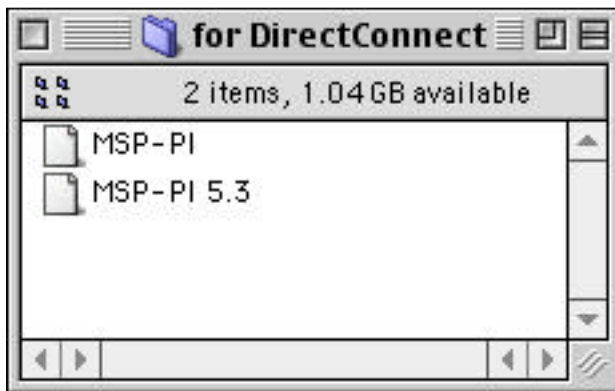
ReWire setup:

If you would like to use VSTi Host as a ReWire client, sending its output to a ReWire host, move the file "ReWireMSP" from the folder "for ReWire" (see image below) into your "System Folder/Extensions" folder, and reboot your computer. You should already have a file called "ReWire" in that folder; if not, be sure you have correctly installed your ReWire host application.



DirectConnect setup:

If you would like to use VSTi Host as a DirectConnect client, sending its output into a ProTools host application, move **one** of the files from the "for DirectConnect" folder (see image below) into the your "System Folder/DAE Folder/Plug-Ins" folder. If you have a Digidesign ProTools | HD system, move the file "MSP-PI 5.3"; for all other ProTools systems, move the file "MSP-PI". After you have moved this file, reboot your computer. You should already have a "DirectConnect" file in that folder; if not, the latest version of DirectConnect is available from Digidesign at <http://www.digidesign.com/download/dc.html>.



Settings Window:

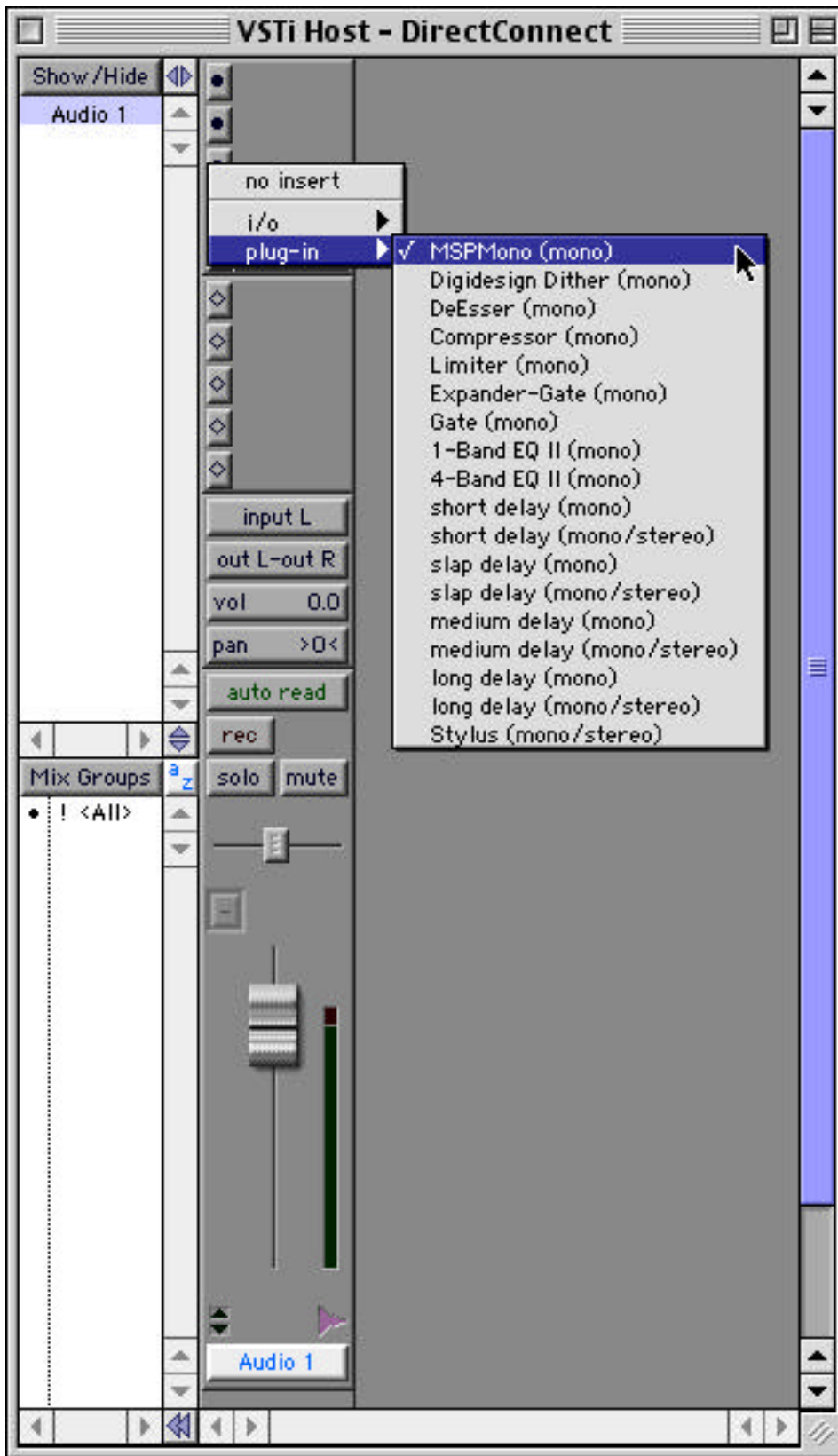
The Audio Driver drop down menu now includes entries for both ReWire and DirectConnect, in addition to the SoundManager and any ASIO drivers you have in your ASIO Drivers folder. Simply choose the appropriate audio driver. If there are any configuration options available for the driver of your choice, you will be able to choose them from the drop down menus, and/or the Control Panel button.



Routing VSTi Host audio into ProTools:

To use VSTi Host with ProTools, follow these instructions, after doing the initial setup described in the DirectConnect section above:

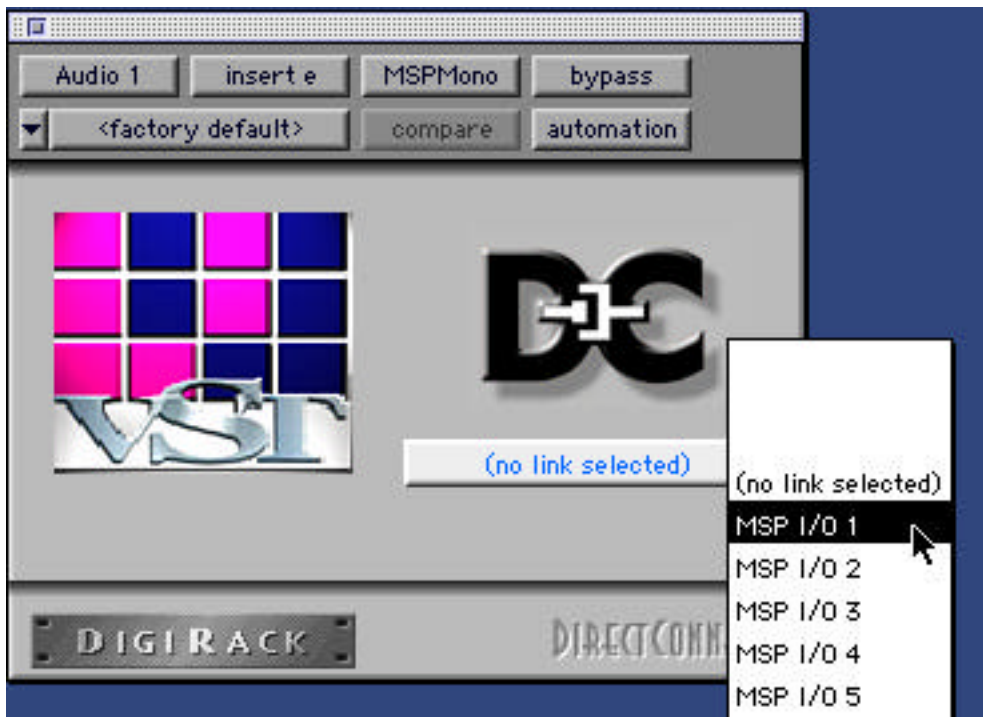
1. Start VSTi Host
2. Go to the Settings window, and select "DirectConnect" as the Audio Driver. Click "Done" in the Settings window.
3. Start ProTools, and create a new track, either mono or stereo. The images below show a mono example, but stereo is similar.
4. Add an "MSPMono" plug-in insert on that track. See image below:



5. You will see a DirectConnect window appear, as below:



6. Click the “(no link selected)” button to choose either VSTi Host’s left channel (“MSP I/O 1”) or right channel (“MSP I/O 2”) as the input source. If you are working on a stereo track, choose “MSP Stereo I/O 1”. See images below:



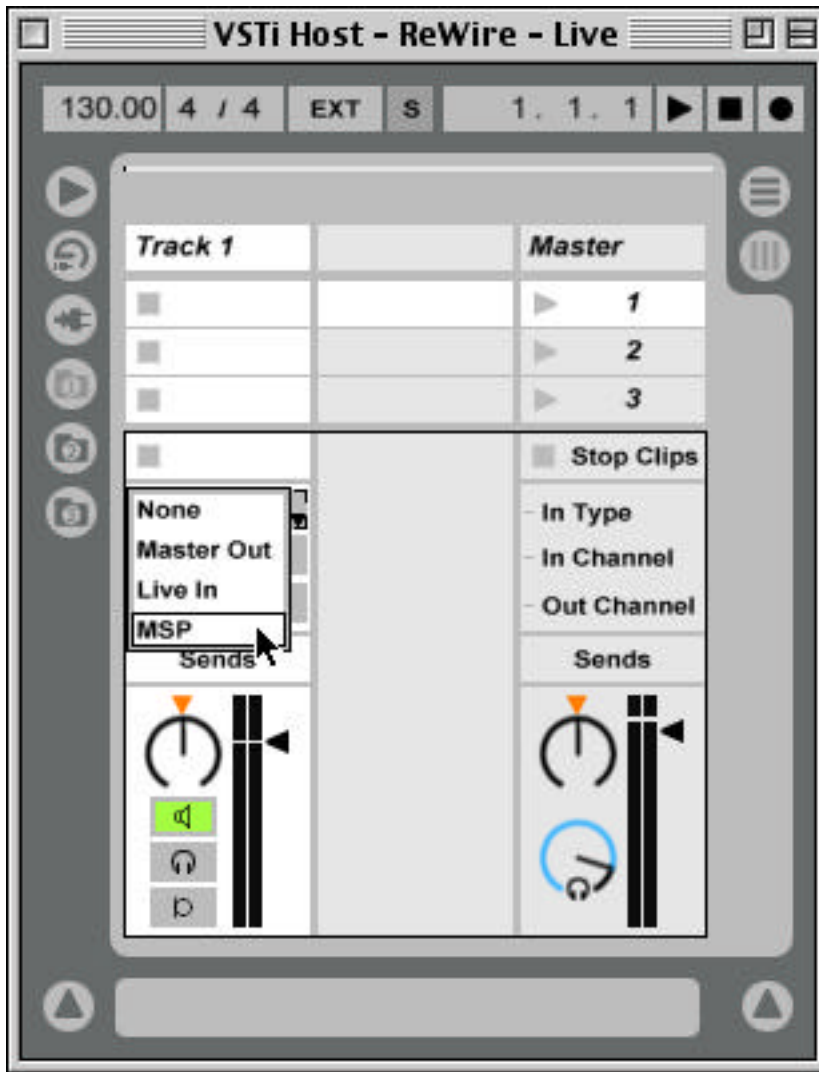


7. That's it – audio should now be routed from VSTi Host directly into your ProTools session.

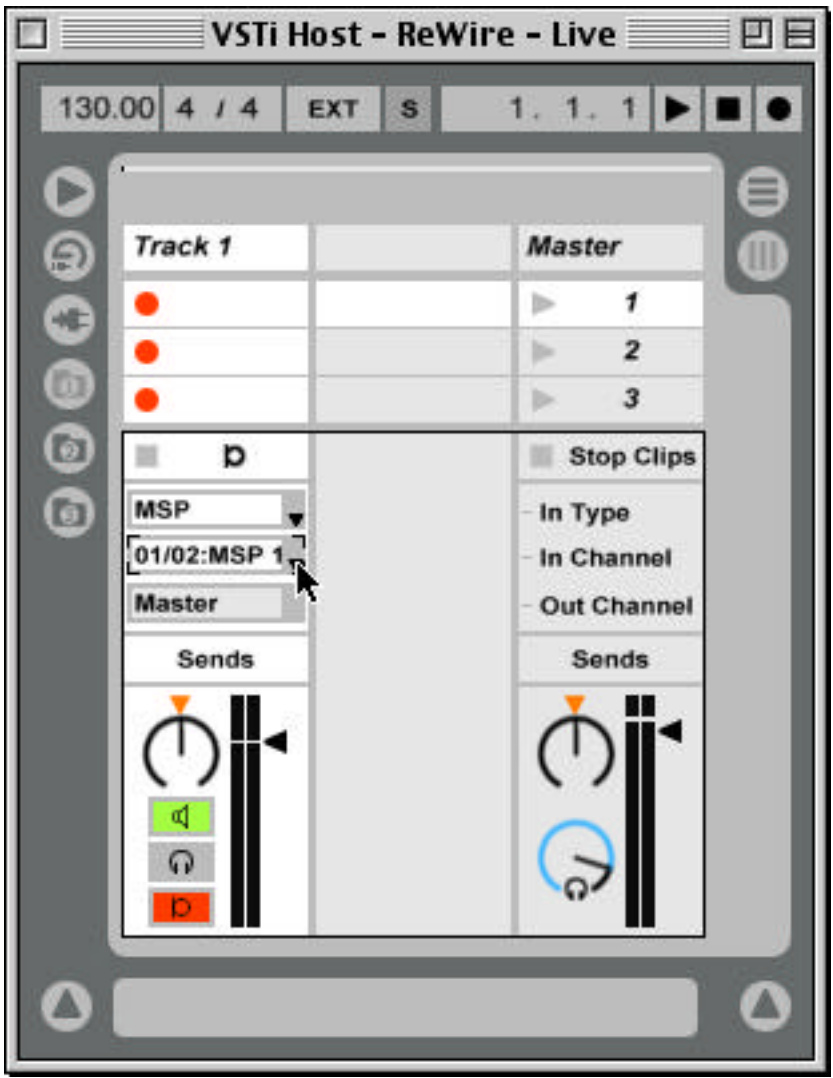
Routing VSTi Host audio into a ReWire host:

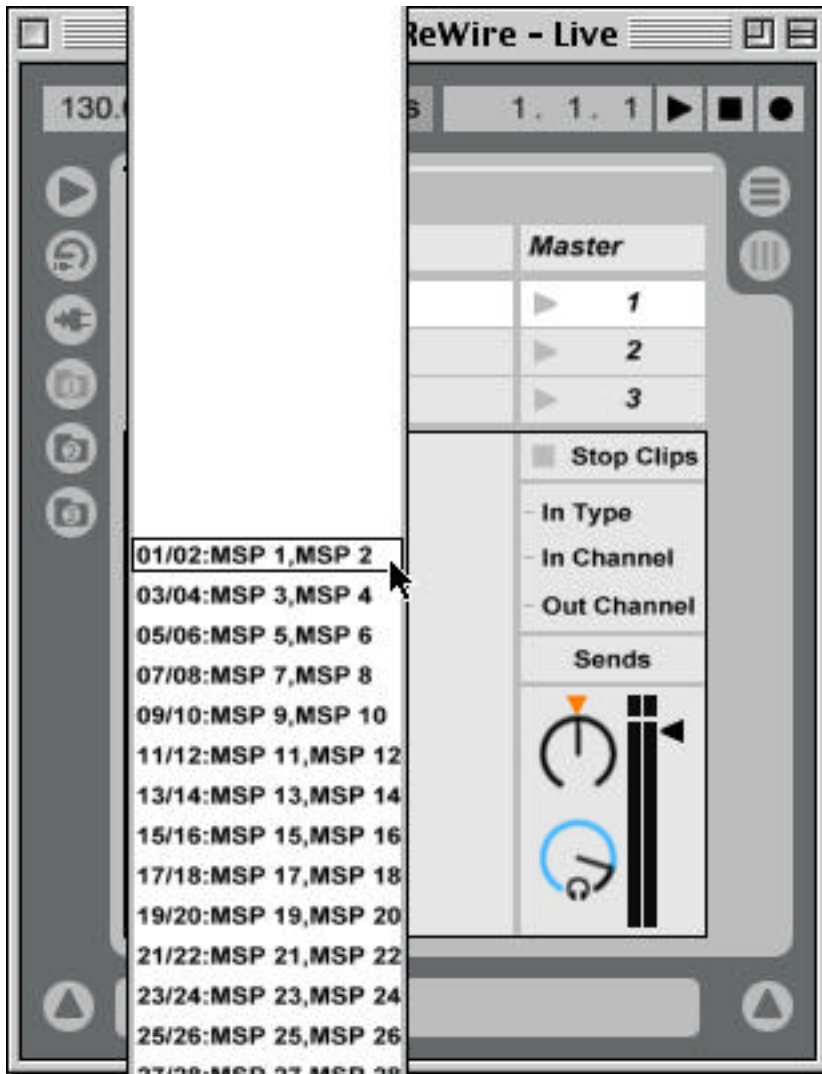
To use VSTi Host with a ReWire host, follow these instructions, after doing the initial setup described in the ReWire section above. This example uses Ableton Live to illustrate, however the procedure is similar for other ReWire host applications.

1. Start VSTi Host
2. Go to the Settings window, and select “ReWire” as the Audio Driver. Click “Done” in the Settings window.
3. Start your ReWire host application.
4. Choose MSP as your ReWire client application. See below:



5. Choose the appropriate VSTi Host input channel - MSP 1 = VSTi Host right channel, and MSP 2 = VSTi Host left channel. In stereo situations, choose MSP 1 and MSP 2, as in the example below:





6. That's it – audio should now be routed from VSTi Host directly into your ReWire host application.

Bugs Fixed in this version:

- * Problem with detection of some OMS MIDI input devices fixed.
- * Improved compatibility with some problematic VST plugins.

Known Bugs and Limitations:

- * Startup screen is not working right - it's supposed to give you a visual indication of which plugins are being scanned upon startup, however right now the startup window does not redraw properly, and if scanning a long

list of plugins, may make you think the application has locked up. Just give it time!

* If no VST instruments or effects are found, two "none"s appear, rather than one, in the respective dropdown menus.

* For now, your VST plugins must be kept within the VstPlugIns folder in the VSTi Host folder. This may be addressed in future versions, such that you will be able to direct VSTi Host to use another VstPlugIns folder on your system.