

# VSTi Host

## User Manual Addendum

OS X version 3.13X

August 24, 2006

Dan Nigrin

### Overview:

Essentially all of the features and functionality of VSTi Host 3.13x running on OS X are the same as in the 3.11 version on OS 9. Please refer to the main User Manual for general instructions on how to use the application. What follows below are notes or changes that refer specifically to the OS X version.

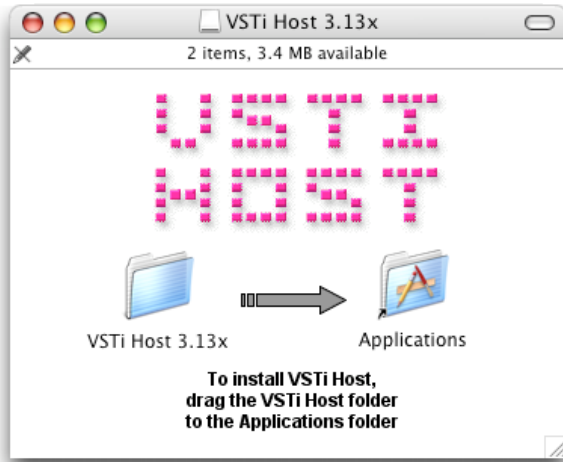
To go directly to a listing of what has changed since the previous version of VSTi Host, scroll to the bottom of this document, where Version Information is listed.

### Requirements:

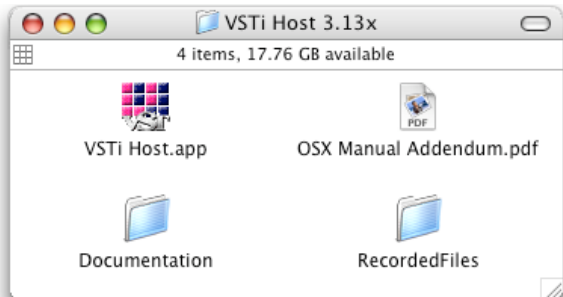
- \* OS X, 10.3.9 or greater
- \* Intel or PowerPC architectures are now supported
- \* OS X compatible VST plugin(s), instrument and/or effects (both CFM and Mach-O formats are supported)

### Installation and Folder Contents:

To install VSTi Host, just double click the .dmg file you download, and drag the folder called **VSTi Host 3.13x** (or **VSTi Host 3.13x Demo**) to the Applications folder icon. This will copy the application and its enclosing folder to the Applications folder on your hard drive:



Insider the folder, you'll see the following files and folders:



Do **NOT** move the VSTi Host application in relation to the **RecordedFiles** folder (or rename the **RecordedFiles** folder). If you do so, the program will not correctly record files.

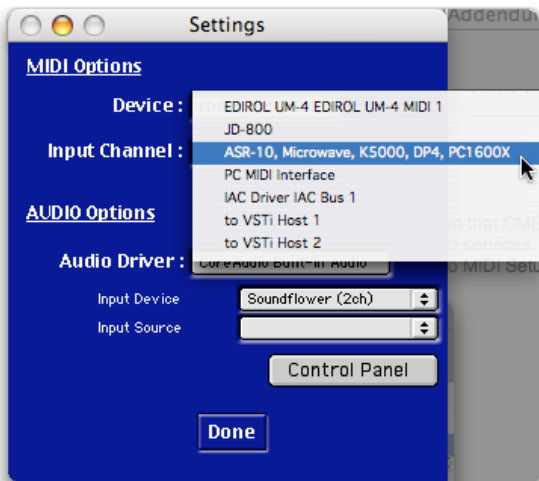
**Patch Name Menus:**

Starting in version 3.1x, VSTi Host has a revised user interface, that makes room for patch name drop down menus for each VST plugin (both instrument and effects). If your plugin has patch names associated with it, they will appear in the drop down menus below the plugin name drop down, when the plugin has been loaded. You can use either the numerical patch selector, or the drop down menu, to select a specific patch for each plugin:



**Settings Window:**

These settings are essentially the same as before, with the exception that OMS is no longer used, and rather CoreMIDI services, and that neither the SoundManager nor ASIO are used, but rather CoreAudio services. Also, beginning with version 3.1x, the names in the MIDI Device drop down reflect the names programmed into Apple's Audio MIDI Setup application.



**MIDI Activity Light:**

There is now a MIDI activity light available on the VSTi unit - it lights when VSTi Host is receiving MIDI data on the MIDI Input channel selected in the Settings window.

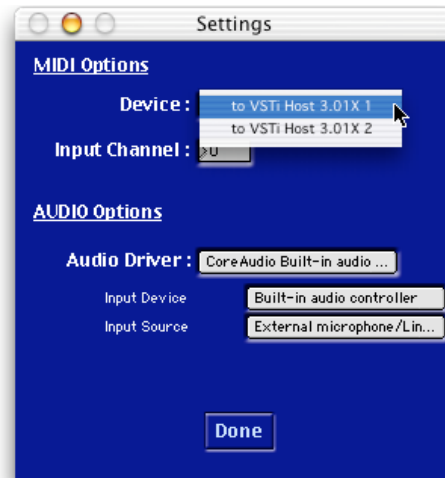


### Inter-application MIDI communication

As illustrated above, you will see *to VSTiHost 1* and *to VSTiHost 2* (or *to VSTiHost Demo 1* and *to VSTiHost Demo 2*) as choices in the MIDI input Device options. These are used when linking to another MIDI generating application on the same computer (e.g. Logic). Just select *to VSTiHost 1* within VSTi Host; when VSTi Host is running, you will be able to choose the corresponding *to VSTiHost 1* port in Logic, etc... to route MIDI information to VSTi Host. Below is an example using Logic 6 to illustrate. Also, don't forget to choose the incoming MIDI channel that you want to use in VSTi Host; if you want VSTi Host to respond to all incoming MIDI channels, choose 0 (Zero).

Also note that on OS X 10.3 and greater, Apple now provides an Inter Application Communication MIDI Bus (IAC Bus) - this can also be used in similar fashion to route MIDI data between other applications and VSTi Host.

Finally, if your ReWire host supports it, VSTi Host (starting with version 3.1x) allows for ReWire MIDI transmission from your ReWire host application - just choose "ReWire" in VSTi Host's MIDI Options section after having selected the ReWire audio driver (see next topic).

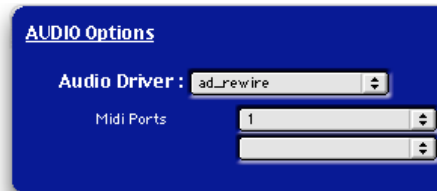
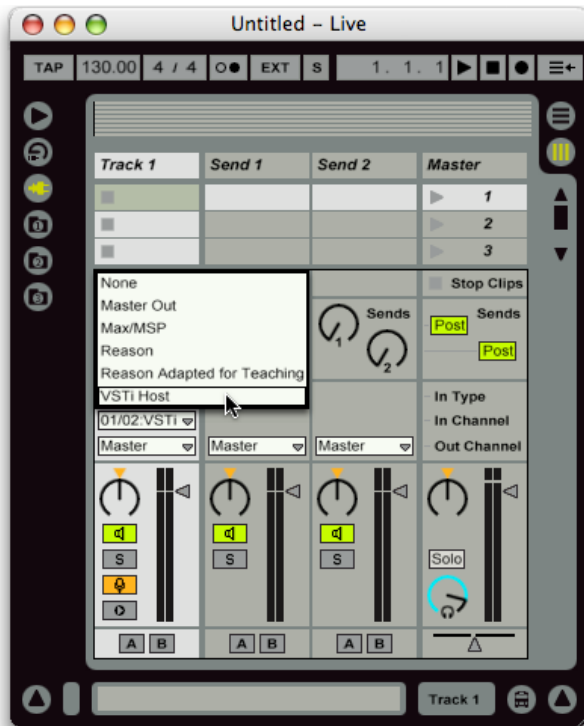


### ReWire:

Starting with version 3.1x, VSTi Host on OS X now supports ReWire, enabling VSTi Host to be a ReWire client to other ReWire host applications. Using such a ReWire host (like ProTools, Logic, Live, Cubase, Traktion, etc...), you can stream audio from VSTi Host in real time directly into these applications.

Just start up your ReWire host application (Ableton Live version 3 is illustrated below), and select VSTi Host as your ReWire client. Then start VSTi Host, and be sure that "ad\_rewire" is selected in the Audio options of the Settings window. That's it - audio you now play in VSTi Host will be streamed to ReWire VSTi Host channels 1 and 2. The procedure is similar in other ReWire hosts.

Please note you may have to set your VSTi Host Audio option to "ad\_rewire" one time initially for VSTi Host to appear as a ReWire client option in your ReWire hosts.



**Other Inter-application Audio communication options:**

If your host application doesn't support ReWire, another option is a free application called **Jack OS X** (<http://www.jackosx.com>). Jack OS X allows you to route audio from essentially any OS X CoreAudio application to any other. Jack OS X works beautifully with VSTi Host.

You can also try another application called **Soundflower**, developed by Cycling 74, which does some of the same things as Jack, and which is freely available (<http://www.cycling74.com>).

**Known Bugs, Limitations & Issues:**

- \* MIDI clock information is currently not routed to VST plugins within VSTi Host.
- \* Online Help window still reflects previous user version's user interface.
- \* Patch number readout is only accurate up to number 99; if a patch number greater than 99 is selected using the drop down menu, then the number will be displayed incorrectly. The left and right patch select arrows will still work properly however.
- \* Occasional crashes when quitting the application - I think this is being caused by specific plugins, specifically some from Native Instruments (e.g. Intakt, Absynth effects). The plugins and application work normally, there is just a crash notification that comes up after Quitting VSTi Host.
- \* For a list of known incompatible plugins, please go to the Support section of the VSTi Host home page, at <http://www.defectiverecords.com/vstihost>.

**Version Information:**

3.13X (released August 24, 2006)

- \* Application now Universal Binary, to support both Intel and PowerPC architectures
- \* Built with Max/MSP 4.6
- \* Updated addendum (this document)

3.12X (released February 19, 2005)

- \* Fixed incompatibility with new version of Cycling 74's Pluggo, version 3.5
- \* Made application more independent of other Cycling 74-based applications installed on same computer, resulting in version incompatibilities. Should now work regardless of what other C74 apps are installed, regardless of their versions
- \* Fixed incompatibility with Edirol FA-101 Firewire audio interface (and maybe other Firewire interfaces too?)
- \* Updated addendum (this document)

3.11X (released August 29, 2004)

- \* Fixed bug that converted all MIDI information going to VST instrument into channel 1, instead of original source channel. Allows for multichannel plugins, which can respond to many MIDI channels at one time, to now work properly
- \* Now compatible with Cycling 74's Pluggo v3.2.1 and Mode v1.1.1 plugins (with the exception of the "ShepardTones" Pluggo plugin - Cycling 74 has acknowledged a bug with this plugin that will be addressed in a future update - for now it must be removed from your VST plugins folder to keep VSTi Host from crashing at startup)
- \* Fixed bug that prevented MIDI port names with no spaces in their names from being recalled properly from Preferences
- \* Increased number of entries possible in both plugin and patch name drop down menus from 128 to 500 entries each
- \* Updated addendum (this document)

3.1X (released July 17, 2004)

- \* Added support for ReWire client mode
- \* Added patch name drop down menus for all VST plugins

- \* MIDI port names now reflect custom port names entered into Audio-MIDI Setup application
- \* Scanning of VST plugins on startup is now more robust - if error is encountered with particular plugin, scanning will continue of remaining plugins.
- \* Display of plugin currently being scanned on startup now reliably displayed in startup window
- \* Added Status Window menu option, to display application startup and status messages (mostly for troubleshooting problems)
- \* Updated addendum (this document)

*3.02X (released May 17, 2004)*

- \* VST Mach-O plugins now compatible (plugins that end in ".vst" are Mach-O plugins)
- \* The standard OS X VST plugins folder (*YourHardDrive/Library/Audio/Plug-Ins/VST/*) is now used, rather than a separate plugins folder
- \* New MIDI activity light
- \* Initial screen now redraws properly (though still doesn't consistently display all plugins that are scanned upon startup!)
- \* Demo tones now sound every 20 seconds (instead of every 10 seconds), and are of lower volume
- \* Fixed two "none"s appearing in dropdown plugin list if no plugins found
- \* Updated addendum (this document)

*3.01X (released March 25, 2003)*

- \* fixed problem recognizing some MIDI input devices
- \* fixed problem with Logic and other host apps in which MIDI communication not transmitted to VSTi Host
- \* improved MIDI timing performance
- \* made *ad* and *midi* folders visible, rather than invisible, within enclosing folder - unstuffing the download package on OS 9 was potentially causing problems with these folders
- \* updated addendum (this document)

*3.0X new addendum (released March 11, 2003)*

- \* updated addendum (this document)

*3.0X (released March 7, 2003)*

- \* initial OS X release.

**Contact:**

vstihost@defectiverecords.com  
<http://www.defectiverecords.com>